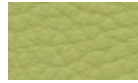
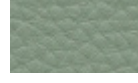




HYDE CV PARCHMENT



PERIDOT



CELADON



FOSSIL



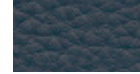
CYPRUS



LONDON



FERN



INKWELL



ONYX



EVO CV ASH



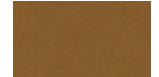
TANGELO



CORK



AQUA



SADDLE



BLUET



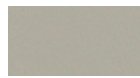
KELLY



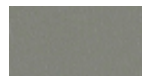
INDIGO



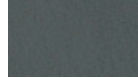
MINK



PUTTY



PEWTER



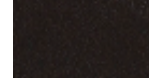
JETTY



BLUESTAR



CYPRESS



ONYX



VANGUARD CV FOIL



CREME



GILDED



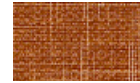
SPROUT



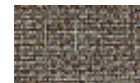
CALICO



LUNETTE



SAVOR



CAVE



STEEL



PEBBLE



FRENCH



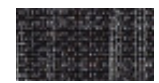
SPRUCE



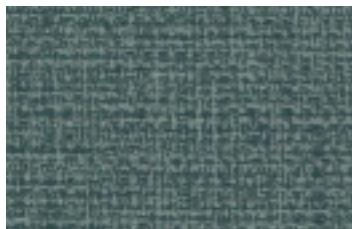
AUTUMN



SEQUOIA



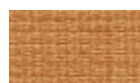
CARBON



LINEN CV CYPRUS



PARCHMENT



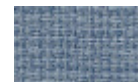
MANDARIN



KHAKI



NICKEL



SKY



JADE



CADET



CHARCOAL



TRIBECA CV CLOUD



MICA



DOWNPOUR



RUBINE



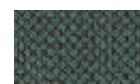
SHADOW



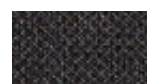
CASCADE



MARINER



PLUME



SLATE

CV SOLIDS

ALLIANCE

Pattern - width	Fiber content	Finish	Abrasion	Lightfastness	Approx. repeat	Cleaning code
EVO CV - 54" ▲ ▲ ▲ ▲ ▲ *	100% Clean Vinyl/Phthalate Free	Protective Topcoat	1,000,000 double rubs	Class 4 200 hours		WS BC (10:1)
Hyde CV - 54" ▲ ▲ ▲ ▲ ▲ *	100% Clean Vinyl/Phthalate Free	Protective Topcoat	1,000,000 double rubs	Class 5 200 hours		WS BC (10:1)
Linen CV - 54" ▲ ▲ ▲ ▲ ▲ *	100% Clean Vinyl/Phthalate Free	Protective Topcoat	288,000 double rubs	Class 4.5 200 hours		WS BC (10:1)
Tribeca CV - 54" ▲ ▲ ▲ ▲ ▲ *	100% Clean Vinyl/Phthalate Free	Protective Topcoat	100,000 double rubs	Class 4 200 hours		W BC (10:1)
Vanguard CV - 54" ▲ ▲ ▲ ▲ ▲ *	100% Clean Vinyl/Phthalate Free	Protective Topcoat	100,000 double rubs	Class 4 200 hours		W BC (10:1)



GREENGUARD certified.
CA Section 01350 compliant
Eligible for CHPS Low-Emitting
Material Credits



Search for fabrics by
approved cleaners



Find hundreds of pre-approved,
in grade and in stock fabrics
in 5 simple steps

* ACT® Registered Certification Marks

These fabrics when used with proper components are compatible with California Technical Bulletin 133

Multiple factors affect fabric durability and appearance retention, including end-user application and proper maintenance

Abrasion test results exceeding ACT Performance Guidelines are not an indicator of product lifespan

Cleaning Code Definition

- WS: Clean with water-based cleaning agents or foam

Visit memosamples.com to view full pattern repeat and complete specs

©2022

08993417



memosamples.com | 800.366.6839

MOMENTUM
TEXTILES & WALLCOVERING