



# PLATEAU

The Plateau table series is designed to create an elegant but functional base for your tables. With its low-profile, square disk base design and square column it has a look designed for today's environments.

## DETAILS

### Base Specifications:

- Standard base dimensions are 17", 22", and 27" square.
- Bases feature 3/8" thick steel plate with 4 adjustable glides that has a 10.50 mm corner radius.
- The column is a 3"x 3" square tube with a 9" x 9" flat top plate to attach to table tops.
- Offered in 40+ standard powder coat finishes.
- Try PLATEAU with PLATFORM seating.
- Also offered in Round top shape.

## SQUARE



### Top Sizes:

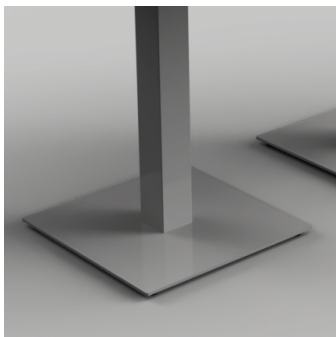
24", 30", 36", 42"

## RECTANGULAR



### Top Sizes:

24 x 48", 24 x 60", 24 x 72"  
30 x 48", 30 x 60", 30 x 72"  
36 x 48", 36 x 60", 36 x 72"



## FOOT DETAIL

## GLIDES



### Equalizer Glide:

Equipped with 1" diameter leveling glides with a plastic foot that can be used on all floor surfaces that allow 1/4" of adjustment.



[bercodesigns.com](http://bercodesigns.com)

888.772.4788

**BERCO**  
*designs*

Specifications are subject to change. Rev 2.2024