

HUBS (Duo & Team)
**SAFETY AND INSTALLATION
INSTRUCTIONS**



Oasis Berco Installation, Operating & Safety Instructions

Linear & Soft Pod, Booth and Hub

- All Oasis Berco products are intended for commercial use.
- Please note that specific installation drawings and instructions are provided at the end of this document.
- **WARNING** Risk of injury – Maximum Load on Table Surface is 200 pounds evenly distributed
- **DRY LOCATIONS ONLY**

IMPORTANT SAFETY INSTRUCTIONS

When using an electrical furnishing, basic precautions should always be followed, including the following: Read all instructions before using this Oasis Berco furnishing.

WARNING: Risk of Electric Shock, Fire, and Injury. Review the assembly instructions to confirm that the appropriate critical components and accessories are being used with the furnishing.

DANGER – To reduce the risk of electric shock:

1. Always unplug this furnishing from the electrical outlet before cleaning or servicing.

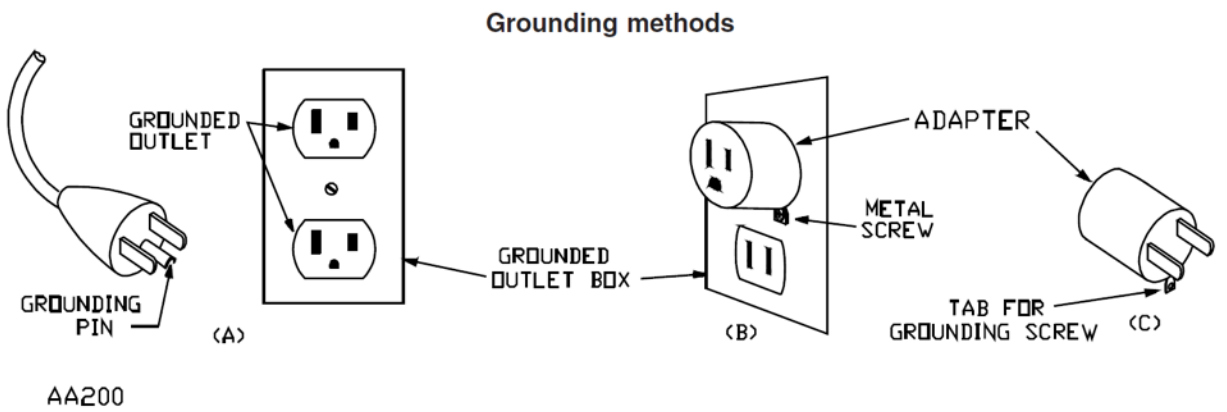
WARNING – To reduce the risk of burns, fire, electric shock, or injury to persons:

1. Unplug from outlet before putting on or taking off parts.
2. Close supervision is necessary when this furnishing is used by, or near children, invalids, or disabled persons.
3. Use this furnishing only for its intended use as described in these instructions. Do not use attachments not recommended by the manufacturer.
4. Never operate this furnishing if it has a damaged cord or plug, if it is not working properly, if it has been dropped or damaged, or dropped into water. Return the furnishing to a service center for examination and repair.
5. Keep the cord away from heated surfaces.
6. Never operate the furnishing with the air openings blocked. Keep the air openings free of lint, hair, and the like.
7. Never drop or insert any object into any opening.
8. Do not use outdoors.
9. Do not operate where aerosol (spray) products are being used or where oxygen is being administered.
10. **WARNING:** Risk of Electric Shock – Connect this furnishing to a properly grounded outlet only. See Grounding Instructions below.
11. For loading always put heavier items at the bottom and not near the top in order to help prevent the possibility of the furnishing tipping over.
12. **WARNING** Risk of injury – Maximum Load on Table Work Surface is 200 pounds evenly distributed.
13. Mount furnishings at the correct height.

SAVE THESE INSTRUCTIONS

GROUNDING INSTRUCTIONS

This product is for use on a nominal 120-volt circuit and has a grounding plug that looks like the plug illustrated in the sketch below. Make sure that the product is connected to an outlet having the same configuration as the plug. No adapter should be used with this product.



Tools needed for assembly:

- Drill/Driver with #2 Phillips Bit
- Flat Pry Bar
- Lint Brush
- White Gloves

Hardware/Accessory Kit:

- 8 – ¼ x 20 x 1 ½" machine screws
- 2 – sofa wall cleats

Before you start:

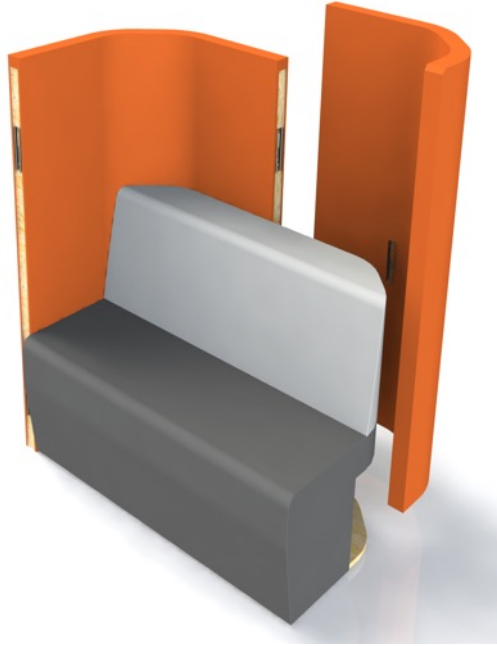
1. Read instructions and check that all parts are accounted for before you start building.
2. Begin assembly as close to final product location as possible.
3. Additional assembly instructions may be required depending on specification of product ordered.
4. Read all Operating & Safety instructions before using this Oasis Berco furnishing.

Step 1



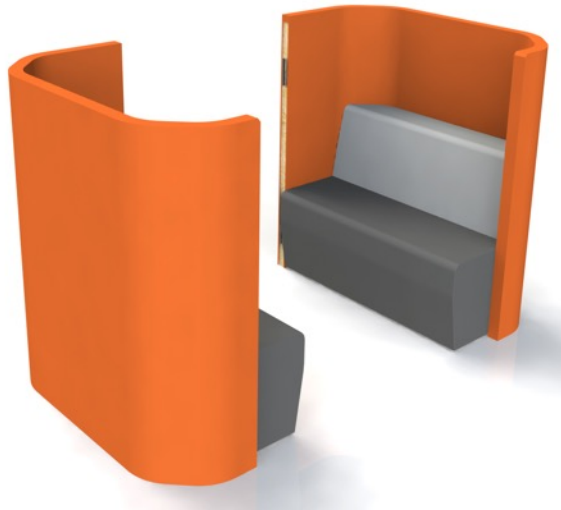
- A. White gloves are recommended during installation to avoid dirt or grease transfer to the Oasis unit.
- B. Start the build with the rear Right Hand corner. The panel will have a spray paint marking on the right side so you know which panel is correct.

Step 2



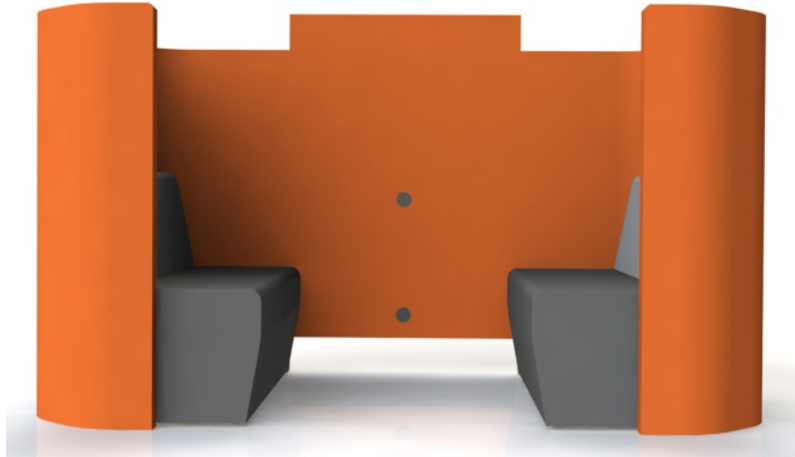
- A. The next panel to install is the curved entrance panel. It has the finished upholstered end.
- B. Align the panel; lift up and slide down engaging the tapered brackets.
- C. The panels will lock together. Make sure the tops of the panels are aligned.
- D. Install the sofa wall cleat to the panels using 4 - $\frac{1}{4}$ x 20 x 1 $\frac{1}{2}$ " machine screws.
- E. Lift the sofa into place and secure it by sliding the wall cleats together.

Step 3



- A. Repeat the same steps to build the left wall/sofa section.

Step 4



- A. Align the sofa sections and the rear wall section.
- B. Raise the rear wall section, slide the two wall sections towards the rear wall.
- C. Lower the rear wall section, making sure all 4 brackets interlock.

Step 5



- A. Install any optional furniture (table, tv mount, electrical). See instructions at the end of this document.
- B. If applicable, run the power cable down through the grommet closest to the work surface and down through the cavity in the wall.
- C. The cord can be connected to a power source either from the inside or outside of the Hub through the grommet at the bottom of the wall panel.
- D. Make sure all panels are aligned and the connections are tight.
- E. If you need to remove a panel to make an adjustment, carefully use a flat pry bar under the panel and lift panel while applying downward pressure on the adjoining panel.
- F. Clean desk surface (if applicable).
- G. Use lint roller to clean upholstery.

OPTIONAL WALL MOUNTED PEDESTAL TABLE

Tools needed for assembly:

- #2 Phillips Screwdriver/Bit

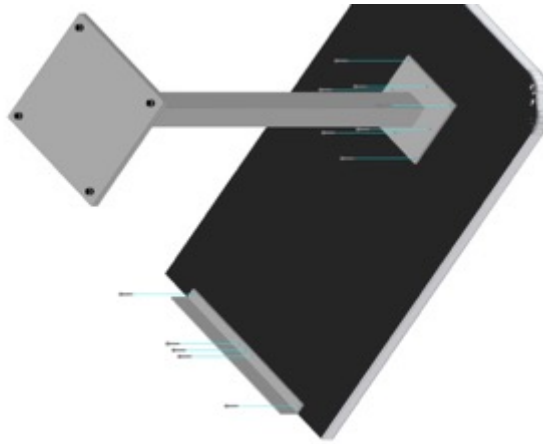
Hardware/Accessory Kit:

- Qty Depends on Size of Table - #10 x 1" Wood Screws

Before you start:

1. Read instructions and check that all parts are accounted for before you start building.
2. Begin assembly as close to final product location as possible.
3. Additional assembly instructions may be required depending on specification of product ordered.
4. Read all Operating & Safety instructions before using this Oasis Berco furnishing.

Step 1



- A. If applicable, install electrical following manufacturer directions provided.
- B. Attach top to legs using #10 x 1" Wood Screws in pre-drilled locations in the table top.
- C. Attach wall bracket to top using #10 x 1" Wood Screws in pre-drilled locations in the table top.

Step 2



- A. If applicable, connect electrical outlet to extension cord coming out of the wall grommet. Push extra cord into the wall through the grommet opening.
- B. Secure table to wall using #10 x 1" Wood Screws
- C. **MAKE SURE TO SCREW SECURELY INTO WALL BLOCKING**

OPTIONAL TV WALL MOUNT

Tools needed for assembly:

- See instructions in TV Wall Mount box

Hardware/Accessory Kit:

- All hardware necessary will be included in TV Wall Mount box

Before you start:

1. Read instructions and check that all parts are accounted for before you start building.
2. Begin assembly as close to final product location as possible.
3. Additional assembly instructions may be required depending on specification of product ordered.
4. Read all Operating & Safety instructions before using this Oasis Berco furnishing.



- A. Image above is representative. Actual bracket may vary slightly.
- B. Designed for TV's 32" to 55"
- C. Max weight limit (including bracket) is 99 lbs.
- D. Install per instructions provided with TV Wall Mount
- E. Route all electrical through grommets to connect to TV.
- F. **MAKE SURE THAT THE BRACKET IS SCREWED SECURELY INTO WALL BLOCKING TO AVOID THE RISK OF THE TV FALLING**