

*HUBS (Solo Small & Solo Large)*  
**SAFETY AND INSTALLATION  
INSTRUCTIONS**



## Oasis Berco Installation, Operating & Safety Instructions

### Linear & Soft Pod, Booth and Hub

- All Oasis Berco products are intended for commercial use.
- Please note that specific installation drawings and instructions are provided at the end of this document.
- WARNING Risk of injury – Maximum Load on Table Surface is 200 pounds evenly distributed
- DRY LOCATIONS ONLY

#### IMPORTANT SAFETY INSTRUCTIONS

When using an electrical furnishing, basic precautions should always be followed, including the following: Read all instructions before using this Oasis Berco furnishing.

**WARNING:** Risk of Electric Shock, Fire, and Injury. Review the assembly instructions to confirm that the appropriate critical components and accessories are being used with the furnishing.

**DANGER** – To reduce the risk of electric shock:

1. Always unplug this furnishing from the electrical outlet before cleaning or servicing.

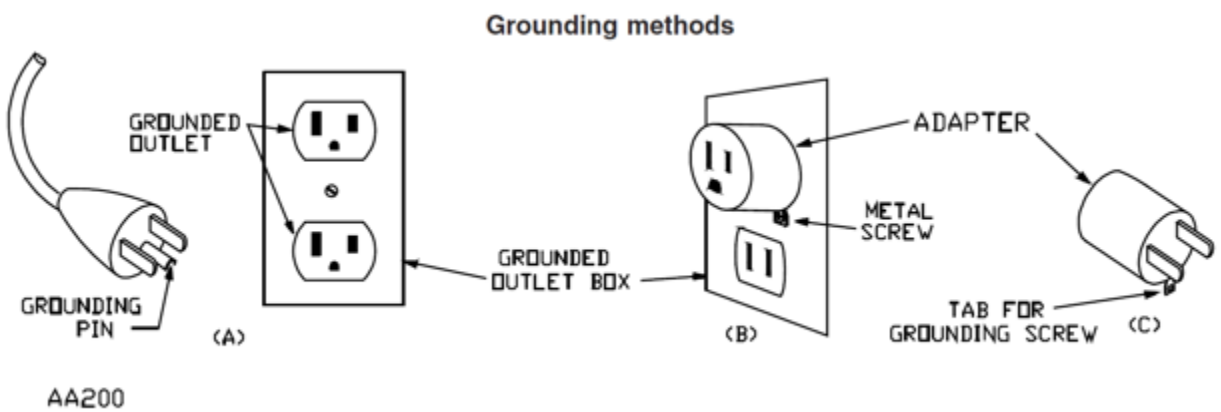
**WARNING** – To reduce the risk of burns, fire, electric shock, or injury to persons:

1. Unplug from outlet before putting on or taking off parts.
2. Close supervision is necessary when this furnishing is used by, or near children, invalids, or disabled persons.
3. Use this furnishing only for its intended use as described in these instructions. Do not use attachments not recommended by the manufacturer.
4. Never operate this furnishing if it has a damaged cord or plug, if it is not working properly, if it has been dropped or damaged, or dropped into water. Return the furnishing to a service center for examination and repair.
5. Keep the cord away from heated surfaces.
6. Never operate the furnishing with the air openings blocked. Keep the air openings free of lint, hair, and the like.
7. Never drop or insert any object into any opening.
8. Do not use outdoors.
9. Do not operate where aerosol (spray) products are being used or where oxygen is being administered.
10. **WARNING:** Risk of Electric Shock – Connect this furnishing to a properly grounded outlet only. See Grounding Instructions below.
11. For loading always put heavier items at the bottom and not near the top in order to help prevent the possibility of the furnishing tipping over.
12. **WARNING** Risk of injury – Maximum Load on Table Work Surface is 200 pounds evenly distributed.
13. Mount furnishings at the correct height.

SAVE THESE INSTRUCTIONS

## GROUNDING INSTRUCTIONS

This product is for use on a nominal 120-volt circuit and has a grounding plug that looks like the plug illustrated in the sketch below. Make sure that the product is connected to an outlet having the same configuration as the plug. No adapter should be used with this product.



AA200

## Tools needed for assembly:

- Drill/Driver with #2 Phillips Bit
- Flat Pry Bar
- Lint Brush
- White Gloves

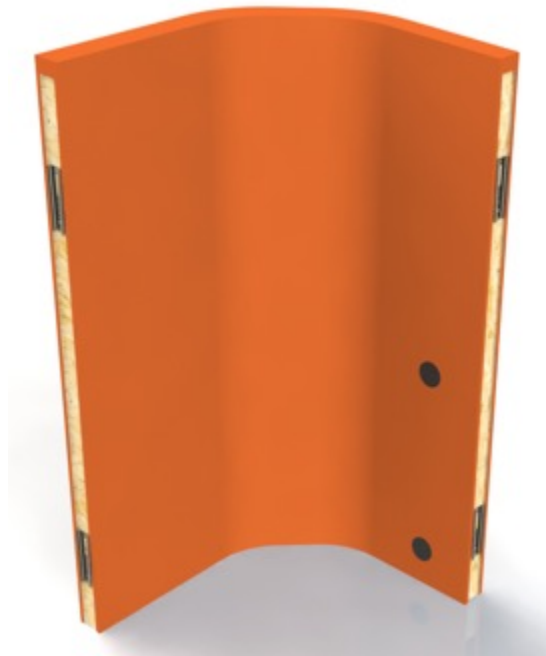
## Hardware/Accessory Kit:

- For Optional Work Surface:
- 11 - #8 x 1 1/2" wood screws
  - 11 - #10 x 1" wood screws
  - Work surface bracket

## Before you start:

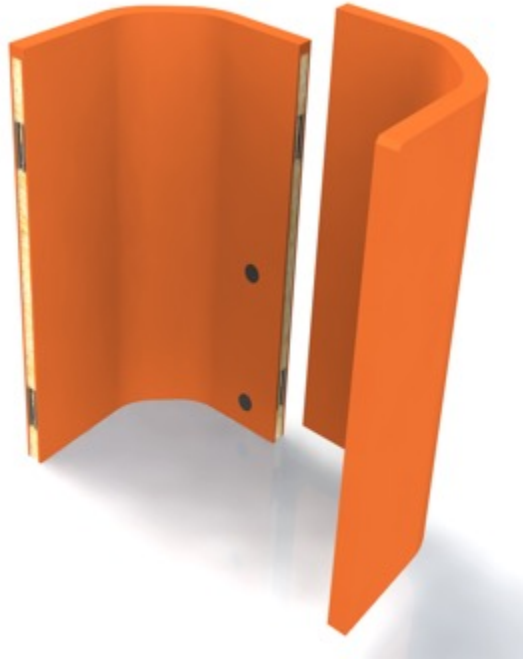
1. Read instructions and check that all parts are accounted for before you start building.
2. Begin assembly as close to final product location as possible.
3. Additional assembly instructions may be required depending on specification of product ordered.
4. Read all Operating & Safety instructions before using this Oasis Berco furnishing.

# Step 1



- A. White gloves are recommended during installation to avoid dirt or grease transfer to the Oasis unit.
- B. These instructions are for a right hand Solo Hub. Directions are mirrored for a left hand unit.
- C. Start with the rear corner as shown above.
- D. Note that the panels will all join together via the tapered brackets that are already installed into the ends of each panel. To attach panels you will lift up the adjoining panel and slide it down into place until it is tight and level.

## Step 2



- A. The next panel to install is the curved entrance panel. It has the finished upholstered end.
- B. Align the panel; lift up and slide down engaging the tapered brackets.
- C. The panels will lock together. Make sure the tops of the panels are aligned.

## Step 3



- A. Skip to Step 6 if there is no work surface to install.
- B. Attach 2 small brackets to the left and right hand walls and one large bracket to the rear wall. Use #8 x 1 1/2" screws. You will see the screw locations marked on the fabric.

## Step 4



- A. Lift the work surface into place. Make sure the corners are pushed securely into the corners of the Hub.
- B. Secure the work surface from the underside using #10 x 1" screws provided.

## Step 5



- A. Install electrical outlet (if purchased) according to directions provided with electrical unit.
- B. Run the power cable down through the grommet closest to the work surface and down through the cavity in the wall.
- C. The cord can be connected to a power source either from the inside or outside of the Hub through the grommet at the bottom of the wall panel.

## Step 6



- A. Connect the remaining curved panel.
- B. Align the panel; lift up and slide down engaging the tapered brackets.
- C. The panels will lock together. Make sure the tops of the panels are aligned.

## Step 7



- A. Install the remaining straight panel with upholstered end.
- B. Align the panel; lift up and slide down engaging the tapered brackets.
- C. The panels will lock together. Make sure the tops of the panels are aligned.

## Step 8



- A. Make sure all panels are aligned and the connections are tight.
- B. If you need to remove a panel to make an adjustment, carefully use a flat pry bar under the panel and lift panel while applying downward pressure on the adjoining panel.
- C. Clean desk surface.
- D. Use lint roller to clean upholstery.